

# Grace



## We Turn 25! A Priceless Journey of Serving the Community

PAGE 8 & 9

A Commemorative Book  
of Priceless Memories

PAGE 3

New Centre in Anchorvale:  
A Range of Services for the  
Fit and Frail

PAGE 4

Healing Conversations  
at SLEC CommCare  
Symposium 2024

PAGE 6

## ISSUE #25

### SLEC'S 25TH ANNIVERSARY

**Pg 3:** A Commemorative Book of Priceless Memories

**Pg 8:** We Turn 25! – A Priceless Journey of Serving the Community

**Pg 10:** Transforming Community Care: 25 Years and Beyond

### CARE@SLEC

**Pg 4:** New Centre in Northshore: Tapping Technology to Enrich Elders' Lives

New Centre in Anchorvale: A Range of Services for the Fit and Frail

### PARTNERS@SLEC

**Pg 5:** New Centres in Choa Chu Kang and Bukit Panjang: Working with REACH Community Services to Better Serve Elders

### LEARNING@SLEC

**Pg 6:** Healing Conversations at SLEC CommCare Symposium 2024

**Pg 7:** New Book Released: Faith Matters, Volume 2

### LIFE@SLEC

**Pg 12:** SLEC Recognised for Excellence in Care

Spotlight on SLEC Staff: Serving Elders as a Young Introvert

# A Message from Our CEO



Priceless – that word describes the moments we shared at the St Luke's ElderCare (SLEC) 25th Anniversary Gala Dinner on 7 November 2024, when more than 500 guests (partners, volunteers, donors, friends, elders) gathered to appreciate and strengthen relationships built over time and over a common mission to impact lives in our communities. We are also honoured to have had President Tharman Shanmugaratnam grace the event.

At the Gala Dinner, we launched the SLEC Community Transformation Fund and aim to raise \$30 million over the next five years. These resources will be channelled towards six essential impact areas to benefit more than 45,000 elders.

Like the videos shown at our Gala Dinner, this issue of our newsletter highlights the contributions of different people since our humble beginnings 25 years ago, the impact we have made in the community, and the remarkable journey we are on to uplift our elders.

As our Chairman mentioned in his opening address at the event, we are now on an unstoppable mission to transform Singapore's ageing population from an inevitable challenge to a world of immense opportunities.

We have opened new centres across the country, incorporating new innovations and collaborating with partners to provide integrated care, and advocating for better community care through the SLEC CommCare Symposium 2024 which explored the connections between dementia and spirituality. We are grateful that our work has been recognised and appreciated by elders – some of their kind words and well wishes are shared in this newsletter issue – and by the sector, through various awards.

As 2024 nears its closing, we thank everyone for sharing their time, talent and treasure with us. Your support has helped us achieve much in the past 25 years. We invite you to continue partnering us in this priceless journey of impacting lives in the community. Here's to 25 years and beyond of transforming community care!

Blessed Christmas and Happy New Year!

**Adj A/Prof (Dr) Kenny Tan**  
Chief Executive Officer

*Penned by our CEO in 2021, the poem below was featured in a thank-you card presented to guests at our 25th Anniversary Gala Dinner, reflecting the event's theme of "Priceless".*

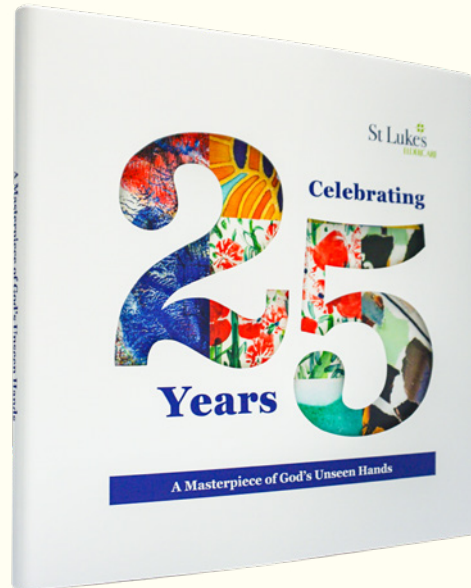
each artful piece with brilliance bright  
the colours radiant in the light  
was bathed in darkness for a time  
and hidden deep within the grime  
for every masterpiece displayed  
required one whose life was laid  
so treasure well each brilliance bright  
as colours flourish in the light

*K.T. (2021)*

# A Commemorative Book of Priceless Memories

In celebration of SLEC's 25th anniversary, the commemorative book *A Masterpiece of God's Unseen Hands* traces our journey, featuring priceless stories from our leaders, partners, and volunteers. We are heartened that even as they support us, they have been positively impacted too, and the quotes below offer a glimpse into the stories featured.

The book also showcases our elders' beautiful artworks that reflect the richness of our elders' lives, and shares SLEC's vision for the future to inspire passion and collective action. Scan the **QR code** to read our book online.



## From our Founding Member

"As I think back, there is no doubt SLEC's growth is evidence and testimony of God's deep love for people across all walks of life. Our holistic care approach goes beyond meeting physical needs to caring for social, psycho-emotional and spiritual needs, and touching the human soul."

– **Prof Lee Soo Ann**, SLEC's Founding Member and First Chairman (2001-2004)

## From our partners and volunteers

"Since partnering with SLEC in 2015, our church and volunteers have been richly blessed. Coming together has bonded our community across race, language and religion."

– **Reverend Gabriel Liew**, Living Hope Methodist Church

"It was such a joy to see volunteers and the elders share smiles and laughter during canvas painting. Volunteering showed me how small things we often take for granted, such as painting and companionship, can bring happiness and are cherished by people."

– **Jasbir Kaur**, staff & volunteer, PSA

"Our students have learnt to appreciate our resilient pioneer generations through establishing rapport and understanding the challenges they faced during the nation-building years."

– **Tan Say Pin**, Head of Department, Character & Citizenship Education, Kuo Chuan Presbyterian Secondary School

## From our elders and their caregivers

"Through SLEC, I have been blessed. I can now care for my husband and stay employed – all within walking distance of my home. I have become a healthier and happier person by keeping active and participating in the Active Ageing programmes."

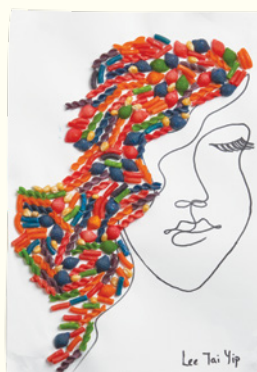
– **Popong Aishah**, Active Ager and part-time staff with SLEC Active Ageing Centre (Care) @ Bishan

"The SLEC staff are marvellous, always treating me like I'm the most important person... I've always been very shy but gradually I've come out of my shell."

– **Catherine Koon**, an elder at SLEC Residence @ AMK

"My grandmother is usually very picky about the people around her, but she is surprisingly comfortable at the SLEC centre. I believe she can feel the sincerity and warmth of the care team."

– **Shaufi Saudi**, caregiver from SLEC Senior Care Centre @ Bukit Batok



Artworks by Lee Tai Yip (left) and Teng Hui Koon (right) featured in the book

## New Centre in Northshore: Tapping Technology to Enrich Elders' Lives

Innovation is a key strategy for SLEC and our newly opened SLEC Active Ageing Centre (Care) @ Northshore is an innovative hub that explores the use of cutting-edge technology to enhance and enrich the lives of our elders.

The centre was officially opened on 13 September 2024 by Dr Janil Puthuchery, Senior Minister of State for Health, and Digital Development and Information, and Member of Parliament for Pasir Ris-Punggol GRC.

It uses technology to improve the elders' quality of life in various ways:

- In the SLEC Golden Memories Programme, elders use **generative artificial intelligence (AI)** to turn their life stories into books, audiobooks, or videos to share with loved ones. This enhances elders' digital literacy, encourages memory recall, and deepens their bonds with their families through the sharing of stories.
- The centre has an Immersive Wall, which allows elders to **digitise their artworks** and watch them get transformed into an interactive exhibition on the wall.
- **Robotics rehabilitation therapy**, with virtual reality and gamification elements, motivates elders to work steadily towards recovery.



An elder interacting with visual projections on the Immersive Wall



SMS Janil Puthuchery viewing a demonstration of the robotics rehab equipment

## New Centre in Anchorvale: A Range of Services for the Fit and Frail

A few elders put up a stunning fashion show at the official opening of our SLEC Active Ageing Centre (Care) @ Anchorvale! Entitled Reminiscence Runway, these elders got to strut their stuff and share their tales with everyone.

Former hairdresser Heng Lan Pang walked down the runway with her salon trolley of hairstyling tools, while Mr Raymond Lee donned his white Taekwondo outfit. There was also Mdm Seah Wee Jong, a former nurse, who wore a doctor's white coat with a stethoscope, and former national basketballer Lim Kwan Choon who shone bright in his yellow sports outfit!

The fashion showcase reflected part of the comprehensive services on offer at the centre, which officially opened on 26 July 2024. It has active ageing programmes, as well as day care and day rehabilitation services, all aimed at improving elders' well-being, regardless of their physical fitness. The official opening was graced by Assoc Prof Jamus Lim, Member of Parliament for Sengkang GRC.



Former basketballer Lim Kwan Choon on the Reminiscence Runway

# New Centres in Choa Chu Kang and Bukit Panjang: Working with REACH Community Services to Better Serve Elders

Alone, we can make a difference. When we join hands, we can break new ground! In 2024, we officially opened two centres that are jointly run with REACH Community Services. The partnership allows both organisations to leverage each other's strengths and provide elders a more integrated and comprehensive network of services.

## REACH-SLEC Active Ageing Centre (Care) @ Teck Whye Vista

This collaboration between REACH and SLEC to jointly run an Active Ageing Centre (Care) is the first of its kind for the community care sector! At this centre, elders have access to three services under one roof – day care and day rehabilitation services by SLEC, and active ageing activities by REACH, just one level above SLEC's space, within the same block.

Elders can visit the centre at any stage of their recovery journey and have access to the support they need. This is especially important as elders often require multiple services as they become frailer and less mobile with age.



Representatives of SLEC (in blue) and REACH (in grey) presenting a token of appreciation to DPM Gan Kim Yong



DPM Gan and SLEC staff looking on as elders take part in a game involving visual image projections

The opening on 11 October 2024 was officiated by Mr Gan Kim Yong, Deputy Prime Minister, Minister for Trade and Industry, and Member of Parliament for Chua Chu Kang GRC.



*"It's very convenient for me to come to this all-in-one centre for rehabilitation to strengthen my legs, and then enjoy other activities like colouring so my mind doesn't turn rusty."*

– Mr Hoong Yan Pui, an elder who started going to the centre in May 2024

## REACH-SLEC Senior Care Centre @ Senja Valley

The first new centre jointly run by REACH and SLEC is in Senja Valley and adds to our network of care, reaching out to elders in Bukit Panjang and western Singapore. It offers day care services and community rehabilitation to support elders in maintaining their physical and cognitive abilities.

We thank Mr Edward Chia, Member of Parliament for Holland-Bukit Timah GRC, for gracing the official opening on 19 July 2024!



MP Edward Chia (centre) with representatives of REACH (in grey) and SLEC

# Healing Conversations at SLEC CommCare Symposium 2024

At SLEC, education is a key strategy for us to build a community of care that is ready to serve our elders. We demonstrate thought leadership and facilitate knowledge sharing through events such as our SLEC CommCare Symposium, held on 20 and 21 September 2024.

Over 500 passionate individuals from the community care sector and all walks of life attended the symposium, themed "Healing Conversations".

The event featured two tracks: about dementia and spirituality, and progressing from wounds to wellness. The first track explored the multi-faceted experiences of people with dementia, and how dementia can affect faith and lived experiences. The second track closely examined wound care, including wound management, wound hygiene, and innovations in vascular health, among other topics.

We appreciate all the speakers – Bishop Emeritus Dr Robert Solomon, Sister Geraldine Tan, Reverend Dr Norman Wong, Adj A/Prof (Dr) Kenny Tan, Adj A/Prof Png Gek Khen, Adj A/Prof Dr Vikram Vijayan Sannasi, Dr Alan Yap, Ms Gillian Beins, Ms Feng Ying, Ms Josephine Ong, Ms Siti Rasyidah, and Ms Chen Xi – for their invaluable insights!

In both tracks of the symposium,

- >70% of the participants polled "strongly agreed" that their learning was enhanced by the speakers' knowledge and experience
- 100% of them said they would recommend the symposium for their colleague/ friend to attend



***"The speakers are practitioners with a wealth of experience and valuable insights. Authentic, practical and thought-provoking."***

***– Participant from the first track "Dementia and Spirituality"***



***"The information gained is enriching, and I can apply it in the course of my work"***

***– Participant from the second track "Wounds to Wellness"***



Reverend Dr Norman Wong with Adj A/Prof (Dr) Kenny Tan



Participants at SLEC CommCare Symposium 2024

# New Book Released: Faith Matters, Volume 2

Dementia affects lives deeply – not just for people with dementia, but for their loved ones, caregivers, and the community as well. The second volume of *Faith Matters: Conversations on Care and Spirituality* takes a deep dive into furthering our understanding of dementia, and how spiritual conversations can be held with and for those with dementia.

Through insightful contributions by Adj A/Prof (Dr) Kenny Tan, Bishop Emeritus Dr Robert Solomon, Reverend Dr Norman Wong, Ms Ho Yin Yin, and Reverend Leow Wen Pin, this book explores not only how to uplift and minister to people with dementia, but also how they, too, can serve others in their faith communities.

Every donation of \$30 to SLEC entitles donors to a copy of *Faith Matters, Volume 2* as a token of appreciation. Scan the **QR code** to find out more:



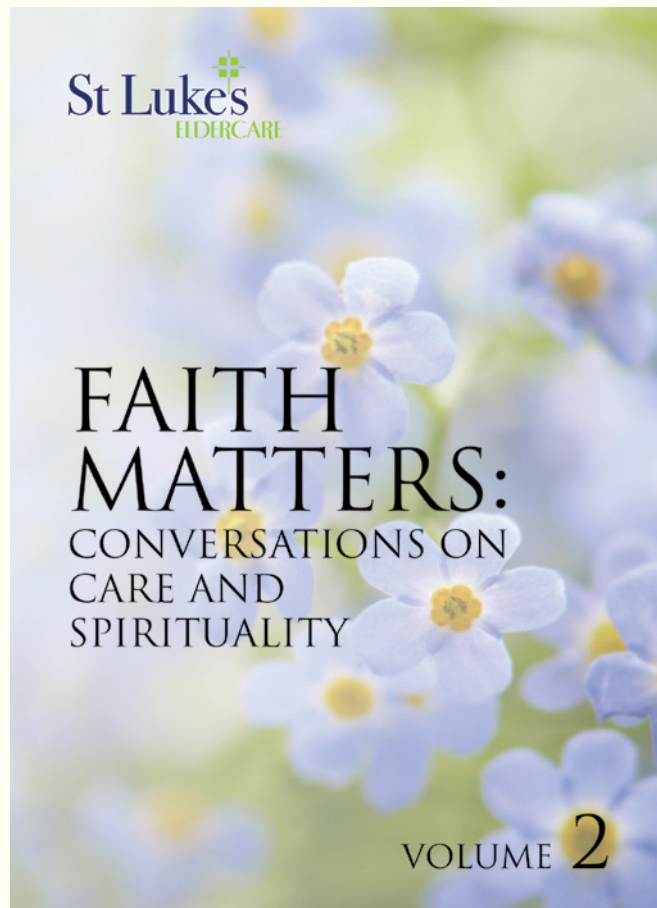
***“To care right, we need to shift our perspectives on ageing, caregiving, and human connections, to offer a more compassionate and dignified experience for both caregivers and elders. Allow me to propose three shifts: from care to contemplation, from service to sojourning, and from information to invitation.”***

– Adj A/Prof (Dr) Kenny Tan, CEO, SLEC



***“It is in this act of remembering that Alzheimer’s patients who have lost their own memory can still be sustained through the collective memory of the community.”***

– Bishop Emeritus Dr Robert Solomon



Articles in Faith Matters, Volume 2:

- Redefining Elder Care
- Living with the Fear of Losing our Memory
- Spiritual Conversations with Each Other
- Ministering to People Living with Dementia
- Helping People with Dementia Serve in their Faith Communities



# We Turn 25! – A Priceless

Over 500 guests – including our elders, partners, donors, volunteers, and members of SLEC's founding team and past management – attended our 25th Anniversary Gala Dinner, held at Pan Pacific Singapore on 7 November 2024. We were honoured to have President Tharman Shanmugaratnam grace the event, themed "Priceless".

We also launched the SLEC Community Transformation Fund, and aim to raise \$30 million to serve 45,000 elders over the next five years (see details in page 11).

Thank you to all our guests and here's to many more years of transforming community care!



*"We've experienced unexpected provision, unprecedented expansion, and moving forward, we have an unstoppable mission."*

*– SLEC Chairman, Professor Ho Yew Kee, in his opening address*



*"St Luke's ElderCare shows the way in community care, which is an essential pillar in how we support Singaporeans as they live longer and healthier lives. It is a model of how community organisations can collaborate with government, healthcare providers, corporations and academic institutions to provide quality care, near the home."*

*– President Tharman Shanmugaratnam*



Pearls are priceless, and transforming community care requires a collective effort. To mark the launch of the SLEC Community Transformation Fund, all the guests were invited to light up their "pearls" – small balls of light.



# Journey of Serving the Community

## A throwback to the past



## Celebrating with friends



Partners and donors that attended the Gala Dinner included those who supported SLEC in its early years and those who started working with us more recently. Depicted here are representatives from Adam Road Presbyterian Church, Evangel Family Church, Hope Church Singapore, Living Praise Presbyterian Church, PSA, Yishun Christian Church (Lutheran) and Zion Gospel Mission, among others, hosted by SLEC staff.



# Transforming Community Care:

We started out with serving 220 elders in just four senior care centres, offering maintenance day care services. We now deliver a full range of integrated services, serving over 15,000 elders across 31 locations. Read about the impact of our various services and how they have enriched elders' lives!

## Active Ageing

### Empowering Elders to Live Independently

"I learnt new skills like making bags out of plastic wrappers. I'm thankful for new friends I have made in my Bishan kampung. I've never felt so happy and healthy for a long time after my husband passed away."

– **Mdm Kamisah Bte Abd Rashid**, Active Ager at SLEC Active Ageing Centre (Care) @ Bishan

## Rehabilitation

### Helping Elders Regain Independence

"Before my stroke, I used to be able to walk 20km every week with my friends and did walkathons. The rehabilitation sessions are tiring, but I know they help me get better. Walking on the Lokomat reminds me of long walks in the park."

– **Mr Sandara S/O Kuppusamy**, elder at SLEC Day Rehabilitation Centre @ Bukit Batok Central



## Senior Care Centres

### Promoting Social Engagement and Wellness

"At SLEC, we create a place where elders feel known and loved. Recently, Mdm Loh was reunited with a friend she hadn't seen in seven years. Seeing the joy on her face when they recognised each other was priceless. At our centre, we nurture not just the body, but also the heart and mind, ensuring our elders find connection and happiness."

– **Mr Stephen Chua**, Centre Manager of SLEC Senior Care Centre @ Whampoa

## Home Care

### Bringing Professional Care to Homes

"When my husband stopped attending daycare after being hospitalised, I didn't know if he could recover. But since we began SLEC Home Care Therapy, he started being encouraged to exercise on his own, and his condition improved. I'm so grateful for the peace of mind that home care service has given me."

– **Mdm Tan Piak Khim**, wife of Mr Lim Hwee Meng, elder receiving SLEC Home Care Therapy

## Residential Care

### A Home Away from Home

"At SLEC Residence, our unique programmes help us connect with our elders, bringing them joy and fulfilment every day. At the heart of it all is the care and respect we have for each individual. One of the highlights of my day is hearing Mdm Ong's cheerful 'Good Morning!' - her warmth is so contagious."

– **Ms Fayth Yee**, Staff Nurse of SLEC Residence @ Ang Mo Kio



# 25 Years and Beyond



Staff nurse Fayth Yee with Mdm Ong Cheng Lian



Mdm Tan Piak Khim, her husband Lim Hwee Meng and physiotherapist Rachel Tan

At our 25th Anniversary Gala Dinner, we launched the SLEC Community Transformation Fund. We aim to raise \$30 million over the next five years, to make a greater I.M.P.A.C.T, benefitting over 45,000 elders and transforming community care across Singapore.

**Innovate** – We will adopt innovative and advanced technology and research approaches, such as having robotics rehabilitation equipment and revamping our 12 Active Ageing Centres (Care) to become thematic specialty hubs.

**Mentor** – We will build the leadership capabilities of our staff, so they effectively lead teams to deliver better care outcomes for our elders, and work with experts to mentor and drive research.

**Programme** – We will develop new programmes while scaling up existing ones for our elders. These will incorporate visual and performing arts, music, thematic dining experiences, and inter-generational activities.

**Advocate** – We will advocate for better community care through thought leadership and knowledge sharing.

**Connect** – We will continue to establish and cultivate connections with partners, to create a more integrated and supportive community for our elders.

**Train** – We will continually train and upskill professionals in the sector and SLEC, volunteers and caregivers through our SLEC CommCare Academy.

Scan the QR code to learn more of our work in the community through five people who have journeyed with us.



Scan the QR code to watch a video about our exciting plans under the IMPACT pillars.



Mdm Kamisah Bte Abd Rashid (third from right) with active agers from SLEC Active Ageing Centre (Care) @ Bishan

# SLEC Recognised for Excellence in Care

At SLEC, we serve with compassion and holistic excellence. Our heartiest congratulations to all the awardees!

## Community Care Manpower Development and Excellence Awards 2024

Organised by the Agency for Integrated Care, these awards recognise achievements of individuals and organisations dedicated to the community care sector.

- The team behind the project “Reducing the Lead Time from Referral to First Visit (Home Rehabilitation)” won the Community Care Excellence Team Award, given to project teams with outstanding quality improvement projects.
- Susie Goh and Willie Soh received the Community Care Manpower Development Awards, which gives them opportunities to grow their careers in the sector.

## Healthcare Humanity Awards 2024

The Healthcare Humanity Awards, presented by the Courage Fund, are given to inspirational role models who go the extra mile for those in need.

- Senior Community Care Associate Michael Chan has offered ideas that inspired sustainable solutions and the use of technology such as Virtual Reality to elevate the care and service experience for elders. Beyond the workplace, he is also a Silver Generation Office ambassador.



Award recipients at the Community Care Manpower Development and Excellence Awards 2024



Michael Chan (second from right, in back row) and Ma Cecilia Macayaon Llego (third from left) with colleagues at the Healthcare Humanity Awards 2024

- Senior Physiotherapist Ma Cecilia Macayaon Llego has cared for elders for 27 years. She consistently takes a person-centred approach to rehabilitation, tailoring activities to each elder’s unique needs. Her dedication extends to end-of-life care, when she organises Remembrance Days to honour elders who passed away.

## Spotlight on SLEC Staff: Serving Elders as a Young Introvert

23-year-old Darren Lim was at a loss of what to do after completing national service. The young introvert had no prior work experience in serving elders, but decided to take a leap of faith and join SLEC. Having worked at SLEC Senior Care Centre @ Jurong East since 2023, he now enjoys his interactions with the elders.

“It’s about your heart in wanting to get to know them and sometimes, it’s just about being present and offering a listening ear,” he said. “I enjoy hearing their stories, learning about how they grew up and what life was like in their younger days.”

Read more about his story in Thir.st:



## 新的榜鹅北岸中心 借助创新技术丰富 年长者的生活

创新是圣路加乐龄关怀的重要策略之一。近日，北岸活跃乐龄护理中心正式开幕，这个新中心致力于探索尖端技术的应用，以提升和丰富年长者的生活质量。

2024年9月13日，卫生部兼数码发展及新闻部高级政务部长、巴西立-榜鹅集选区议员普杰立医生为中心主持了开幕仪式。

中心通过多种创新技术来改善年长者的生活：

- 在“黄金岁月回忆录”计划中，长者使用人工智能将自己的人生故事转化为书籍、有声书或视频，与亲友分享。这不仅提升了他们的数码素养，还鼓励他们回忆往事，并通过讲述故事来加深与家人的联系。
- 中心设有一面沉浸式互动墙，年长者可以将自己的艺术作品数码化，并观看作品在墙上转化为互动展览。
- 通过虚拟现实和游戏元素结合的机器人康复设备，支持年长者的康复训练，加速他们恢复日常活动的的能力。



一位年长者与沉浸式互动墙上的视觉投影互动



普杰立医生观看机器人康复设备的演示

## 新的盛港安谷中心 为健康和体弱的年长者 提供全面服务

在圣路加乐龄关怀安谷活跃乐龄护理中心的开幕式上，几位年长者通过精彩的时装秀展现了他们的独特故事。通过这场名为“回忆跑道”（Reminiscence Runway）的秀中，年长者们用服装演绎了他们的生活回忆与成就。

前美发师邢兰彭女士带着她的美发工具手推车亮相，展现专业风采；李志昌先生穿着白色跆拳道服，散发自信；前护士谢维荣女士身穿医生白袍，手持听诊器，重温职业记忆；前国家篮球运动员林宽春先生则身穿亮黄色运动服，神采奕奕地登场。

该中心于2024年7月26日正式开幕，提供一系列综合服务，包括活跃乐龄活动、日间护理和日间康复服务，旨在提升年长者的整体康乐状态，无论他们的体能状况如何。盛港集选区议员林志蔚副教授出席了开幕仪式。



前国家篮球运动员林宽春先生，神采奕奕地登上“回忆跑道”

# 社区护理转型： 展望25年及未来

从最初在四个年长者护理中心为220名年长者提供日间护理服务起步，到如今在31个地点为超过15,000名年长者提供全面综合服务，我们的使命不断扩展，服务不断升级：

- 通过**活跃乐龄**，提升年长者独立生活的能力。
- 通过**康复**服务，帮助年长者重获自立。
- 通过**护理中心**，促进年长者的社会参与和身心健康。
- 通过**家庭护理**，将专业护理服务送到年长者家中。
- 通过**疗养设施**，为年长者提供一个温暖的“第二个家”。

扫码了解更多，看看我们如何通过多元服务丰富年长者的生活：



在庆祝25周年的晚宴上，我们启动了“圣路加乐龄关怀社区护理转型基金”。我们的目标是在未来五年内筹集3,000万元，以拓展服务，推动I.M.P.A.C.T.计划，服务覆盖超过45,000名年长者，为新加坡的社区护理做出更大的贡献。

I.M.P.A.C.T.计划的核心目标包括：

**创新 (Innovate)**：采用创新技术与研究方法，配备机器人康复设备，改造12个活跃乐龄护理中心成专题中心。

**导师 (Mentor)**：培养领导力，帮助员工有效带领团队，提升年长者护理效果，并与专家携手合作推动研究计划。

**项目 (Programme)**：为年长者推出新项目，并扩展现有项目的规模，包括视觉与表演艺术、音乐活动、主题餐饮体验及跨代互动。

**倡导 (Advocate)**：通过思想引领与知识共享，倡导更好的社区护理模式。

**联结 (Connect)**：持续深化与合作伙伴的联系，创造更加融洽与互助的社区环境。

**培训 (Train)**：通过圣路加乐龄关怀社区护理学院 (SLEC CommCare Academy)，提升护理人员、志愿者及专业人士的技能与素养。

扫码观看关于I.M.P.A.C.T.计划的精彩视频：





SLEC is an Institution of Public Character (IPC).  
SLEC IPC number: IPC000155

### Donation Amount

- One-time Donation       Monthly Donation  
 \$50       \$200       \$500       Others: \_\_\_\_\_

All donations to St Luke's ElderCare Ltd are eligible for a 250% tax deduction.

### Donor Details

Name / Organisation [Dr / Mr / Mrs / Ms / Mdm]: \_\_\_\_\_  
 NRIC / FIN / UEN No: \_\_\_\_\_ (compulsory for automatic tax deduction)

### Contact Details

Email: \_\_\_\_\_ Contact Number: \_\_\_\_\_  
 Address: \_\_\_\_\_ Singapore: \_\_\_\_\_

We are going green! St Luke's ElderCare will issue e-receipts for all tax-deductible donations.  
 Please fill in your email address to receive an acknowledgement email.

- If you would like to receive a hard copy tax-deductible receipt, please tick here.

- Donation By Cheque** (for one-time donation only)

Please make cheque payable to "St Luke's ElderCare Ltd"

Cheque Number: \_\_\_\_\_

- Credit Card**

Visa / Mastercard:



Name on Card: \_\_\_\_\_ Expiry Date: \_\_\_\_\_

MM / YY

Signature(s):

By sending us this information, you fully understand and consent to the use and disclosure of your personal data which you have provided, for processing donations, submission of donation data to the Inland Revenue Authority of Singapore, fundraising appeals, marketing, advertising and receiving of eldercare and caregiving information, news and updates via email and newsletter in accordance with our privacy policy ([slec.org.sg/privacy-policy](http://slec.org.sg/privacy-policy)). You may unsubscribe at any point in time from our email alerts or the newsletter by emailing us at [donorcare@slec.org.sg](mailto:donorcare@slec.org.sg).

### FOR ST LUKE'S ELDERCARE'S COMPLETION

Bank	Branch	St Luke's ElderCare Ltd														
7	1	7	1	0	3	3	0	3	3	0	2	0	6	6	0	7

Bank	Branch	Donor's Account No.														

Donor's Reference No.

- GIRO**

Name of Bank: \_\_\_\_\_ Branch: \_\_\_\_\_

Name(s) as in Bank Records: \_\_\_\_\_

Bank Account Number: \_\_\_\_\_ Bill to: \_\_\_\_\_

St Luke's ElderCare Ltd

Signature(s) / Thumbprint(s):

Date:

- I/We hereby instruct you to process the instruction from St Luke's ElderCare Ltd to debit my/our account.
- You are entitled to reject St Luke's ElderCare Ltd debit instruction if my/our account does not have sufficient funds and charge me/us a fee for this. You may also, at your discretion, allow the debit even if it results in overdraft on the account and impose charges accordingly.
- This authorisation will remain in force until terminated by your written notice sent to me/our address last known to you or upon receipt of my/our written revocation through St Luke's ElderCare Ltd.

### FOR BANK'S COMPLETION

This Application is hereby **REJECTED** (please tick) due to:

- Signature/Thumbprint differs from Bank's records  
 Signature/Thumbprint incomplete/unclear  
 Account Operated by Signature/Thumbprint  
 Wrong Account Number  
 Amendments not countersigned by customer  
 Other Reasons: \_\_\_\_\_

Name of Approving Officer: \_\_\_\_\_

Date: \_\_\_\_\_ Authorised Signature: \_\_\_\_\_

*"The kids are so cute and well-behaved. I always look forward to spending time with them." — Mdm Ong Kim Hua, 78*

*Every week, Mdm Ong looks forward to spending time with her young friends from Skool4Kidz as part of a 30-week intergenerational programme. You can support elders like Mdm Ong and make a meaningful impact through planned giving.*



To find out how to include SLEC in your CPF nomination or get started on your legacy planning, please email us at [donorsupport@slec.org.sg](mailto:donorsupport@slec.org.sg)

**BUSINESS REPLY SERVICE**  
PERMIT NO. 09381

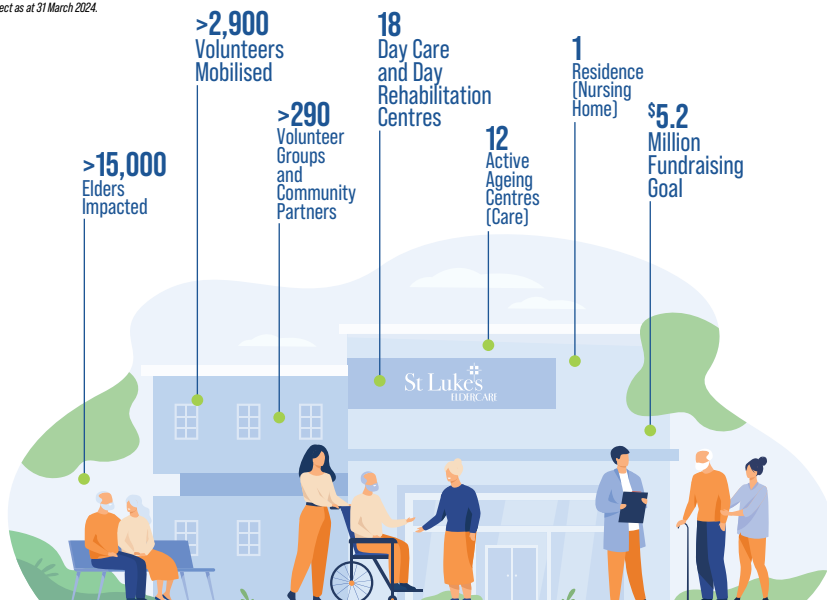


**ST LUKE'S ELDERCARE LTD**

Fundraising Department  
461 Clementi Road #04-11  
Block A, SIM Headquarters  
Singapore 599491

Postage will be paid by addressee. For posting in Singapore only.

\*Information is correct as at 31 March 2024.



**DONATE ONLINE**

Donating online is easy, hassle-free and helps us save on administrative costs and labour. Thank you!



<https://bit.ly/24NLT2>

**St Luke's ElderCare**  
461 Clementi Road #04-11, Block A,  
SIM Headquarters Singapore 599491

+65 6717 2777

[donorsupport@slec.org.sg](mailto:donorsupport@slec.org.sg)

[www.slec.org.sg](http://www.slec.org.sg)

[in](#) [f](#) [@](#) [stlukeseldercare](#)